



Product / Catalog

Details Make Our Profession

We specialize in the design
and development of high quality antibodies & proteins.

Website



LinkedIn



www.leadgenebio.com

TEL : +886-6-2536677 (Headquarter)
+886-2-27065528 (Taipei Office)
E-MAIL : info@leadgene.com.tw

2023 Oct



/// About Leadgene

Leadgene Biomedical, Inc. develops and manufactures assay tools. It also offers contract research services to the diagnostic and pharmaceutical industries.

Established in 2013, our commitment is clear:

“To accelerate biomedical advancement through innovative and prosperous nature of research and development.”

The company was led by a group of young scientists. It provides premium quality reagents through creative and scientific approaches, with production standards outlined in quality management systems ISO 13485 and GMP/QMS. To date, Leadgene has built its recognized expertise in technology innovation and will continue to expand these efforts throughout our entire product portfolio.



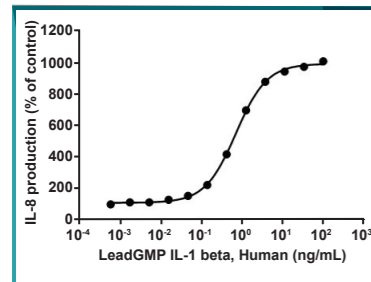
/// Contents

| | |
|----------------------------------|----|
| GMP-Grade Products | 1 |
| Cytokines | 2 |
| Growth Factors | 7 |
| Chemokines | 9 |
| Enzymes | 11 |
| Neurotrophins | 11 |
| Lectins | 12 |
| Other Proteins | 12 |
| Virus-Like Particles | 12 |
| Viral Antigens | 13 |
| Primary Antibodies | 15 |
| Secondary Antibodies | 21 |
| Amplification Technologies | 24 |
| Molecular Biology | 25 |
| Cell Biology Reagents | 26 |
| Protein Engineering | 27 |
| ELISA Kits | 28 |
| LEADSPHERE® Technology | 28 |

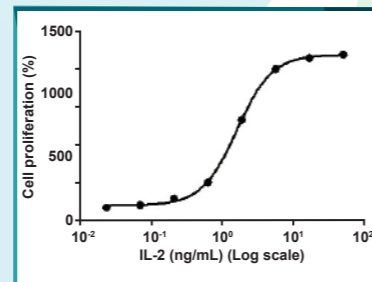
GMP Products

| Cat. No. | Product name | Cat. No. | Product name |
|---------------|---|---------------|---|
| LDG020PHE-GMP | LeadGMP® Human 4-1BBL Protein, His Tag, E. coli | LDG008PHE-GMP | LeadGMP® Human IL-10 Protein, His Tag, E. coli |
| LDG018PHE-GMP | LeadGMP® Human FGF-2 (aa 135-288) Protein, His Tag, E. coli | LDG009PHE-GMP | LeadGMP® Human IL-15 Protein, His Tag, E. coli |
| LDG019PHE-GMP | LeadGMP® Human Flt-3 Ligand Protein, His Tag, E. coli | LDG011PHE-GMP | LeadGMP® Human IL-21 Protein, His Tag, E. coli |
| LDG012PHE-GMP | LeadGMP® Human GM-CSF Protein, His Tag, E. coli | LDG022PHE-GMP | LeadGMP® Human SCF Protein, His Tag, E. coli |
| LDG013PHE-GMP | LeadGMP® Human IFN Gamma Protein, His Tag, E. coli | LDG015PHE-GMP | LeadGMP® Human TGF Beta 1 Protein, His Tag, E. coli |
| LDG002PHE-GMP | LeadGMP® Human IL-1 Beta Protein, His Tag, E. coli | LDG014PHE-GMP | LeadGMP® Human TNF Alpha Protein, His Tag, E. coli |
| LDG003PHE-GMP | LeadGMP® Human IL-2 Protein, His Tag, E. coli | LDG017PHE-GMP | LeadGMP® Human TPO Protein, His Tag, E. coli |
| LDG004PHE-GMP | LeadGMP® Human IL-3 Protein, His Tag, E. coli | LDG002R-GMP | LeadGMP® Endoglycosidase H (Endo H) |
| LDG005PHE-GMP | LeadGMP® Human IL-4 Protein, His Tag, E. coli | LDG026PHE-GMP | LeadGMP® Human Activin A Protein, Tag Free, E. coli |
| LDG006PHE-GMP | LeadGMP® Human IL-6 Protein, His Tag, E. coli | LDG025PHE-GMP | LeadGMP® Human IL-18 Protein, Tag Free, E. coli |
| LDG007PHE-GMP | LeadGMP® Human IL-7 Protein, His Tag, E. coli | LDG24GPHE-GMP | LeadGMP® Human EGF Protein, His Tag, E. coli |

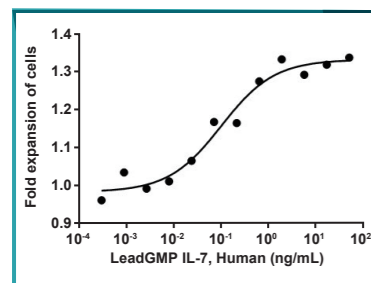
Highlighted Products



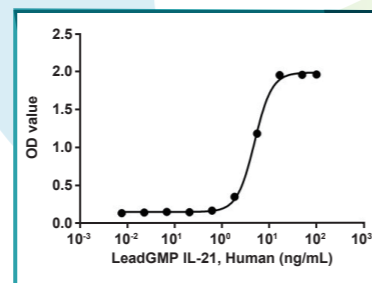
LeadGMP® Human IL-1 Beta Protein, His Tag, E. coli (LDG002PHE-GMP) induced IL-8 secretion in HT29 cells, with the ED₅₀ at 0.69 ng/mL.



LeadGMP® Human IL-2 Protein, His Tag, E. coli (LDG003PHE-GMP) stimulated CTLL-2 cell proliferation, with the ED₅₀ at 1.5 ng/mL.



LeadGMP® Human IL-7 Protein, His Tag, E. coli (LDG007PHE-GMP) stimulated human PBMC cell proliferation, with the ED₅₀ at 0.1 ng/mL.



LeadGMP® Human IL-21 Protein, His Tag, E. coli (LDG011PHE-GMP) enhanced IFN gamma secretion in NK-92 cells, with the ED₅₀ at 4.9 ng/mL.

Cytokines

Human

| Cat. No. | Product name | Cat. No. | Product name |
|-----------|--------------------------------|-----------|---|
| LDG120PHE | Human 4-1BBL, His Tag, E. coli | LDG117PHE | Human FASL, His-SUMO Tag, E. coli |
| LDG127PHE | Human AITRL, His Tag, E. coli | LDG092PHE | Human Flt-3 Ligand, His Tag, E. coli |
| LDG124PHE | Human APRIL, His Tag, E. coli | LDG061PHE | Human GIF, His Tag, E. coli |
| LDG128PHE | Human BAFF, His Tag, E. coli | LDG002PHM | Human HMGB1 (C23A, C45A), His-SUMO Tag, HEK293 |
| LDG099PHE | Human BMP-2, His Tag, E. coli | LDG003PHM | Human HMGB1 (C23A, C45A, C106A), His-SUMO Tag, HEK293 |
| LDG100PHE | Human BMP-3, His Tag, E. coli | LDG049PHE | Human HMGB1, His Tag, E. coli |
| LDG101PHE | Human BMP-4, His Tag, E. coli | LDG001PHM | Human HMGB1, His-SUMO Tag, HEK293 |
| LDG102PHE | Human BMP-5, His Tag, E. coli | LDG050PHE | Human HMGB2, His Tag, E. coli |
| LDG103PHE | Human BMP-6, His Tag, E. coli | LDG004PHM | Human HMGB2, His-SUMO Tag, HEK293 |
| LDG104PHE | Human BMP-7, His Tag, E. coli | LDG045PHE | Human IFN Alpha 1a, His Tag, E. coli |
| LDG105PHE | Human BMP-8a, His Tag, E. coli | LDG046PHE | Human IFN Beta 1a, His Tag, E. coli |
| LDG106PHE | Human BMP-8b, His Tag, E. coli | LDG047PHE | Human IFN Gamma, His Tag, E. coli |
| LDG107PHE | Human BMP-9, His Tag, E. coli | LDG098PHE | Human IFN Omega, His Tag, E. coli |
| LDG108PHE | Human BMP-10, His Tag, E. coli | LDG002PHE | Human IL-1 Alpha, His Tag, E. coli |
| LDG109PHE | Human BMP-11, His Tag, E. coli | LDG003PHE | Human IL-1 Beta, His Tag, E. coli |
| LDG110PHE | Human BMP-12, His Tag, E. coli | LDG094PHE | Human IL-1RA, His Tag, E. coli |
| LDG111PHE | Human BMP-13, His Tag, E. coli | LDG004PHE | Human IL-2, His Tag, E. coli |
| LDG112PHE | Human BMP-14, His Tag, E. coli | LDG005PHE | Human IL-3, His Tag, E. coli |
| LDG113PHE | Human BMP-15, His Tag, E. coli | LDG006PHE | Human IL-4, His Tag, E. coli |
| LDG114PHE | Human BMP-16, His Tag, E. coli | LDG007PHE | Human IL-5, His Tag, E. coli |
| LDG139PHE | Human CHI3L1, His Tag, E. coli | LDG008PHE | Human IL-6, His Tag, E. coli |

Cytokines

Human

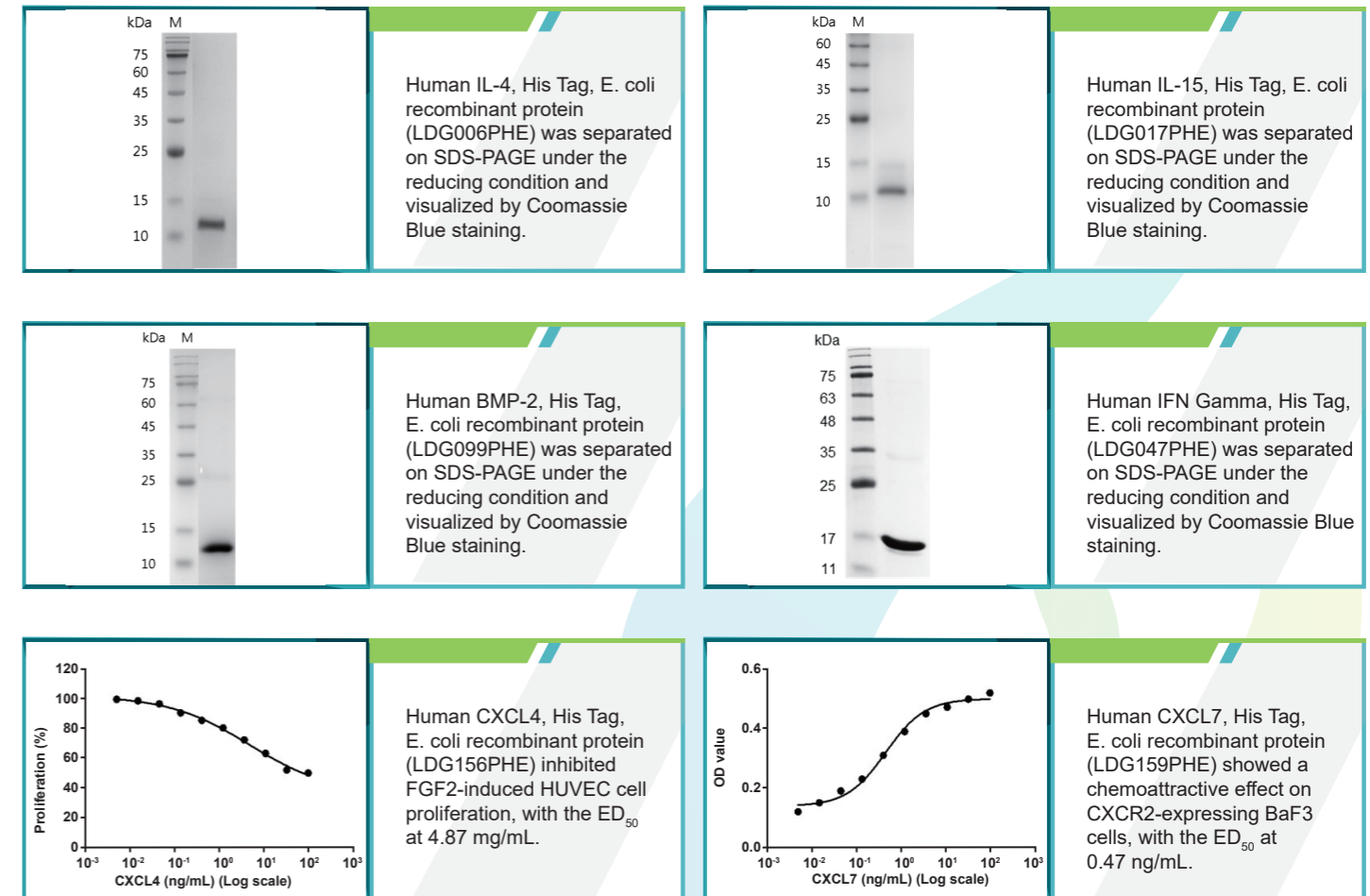
| Cat. No. | Product name | Cat. No. | Product name |
|-----------|--|-----------|--------------------------------------|
| LDG009PHE | Human IL-7, His Tag, E. coli | LDG030PHE | Human IL-26, His Tag, E. coli |
| LDG010PHE | Human IL-8 (aa 28-99), His Tag, E. coli | LDG031PHE | Human IL-27 (EBI3), His Tag, E. coli |
| LDG011PHE | Human IL-9, His Tag, E. coli | LDG032PHE | Human IL-28A, His Tag, E. coli |
| LDG012PHE | Human IL-10, His Tag, E. coli | LDG097PHE | Human IL-28B, His Tag, E. coli |
| LDG013PHE | Human IL-11, His Tag, E. coli | LDG033PHE | Human IL-29, His Tag, E. coli |
| LDG014PHE | Human IL-12 (p35), His Tag, E. coli | LDG034PHE | Human IL-30, His Tag, E. coli |
| LDG015PHE | Human IL-12 (p40), His Tag, E. coli | LDG035PHE | Human IL-31, His Tag, E. coli |
| LDG006PHM | Human IL-12 (p70), His Tag, HEK293 | LDG036PHE | Human IL-32 Alpha, His Tag, E. coli |
| LDG016PHE | Human IL-13, His Tag, E. coli | LDG037PHE | Human IL-33, His Tag, E. coli |
| LDG017PHE | Human IL-15, His Tag, E. coli | LDG038PHE | Human IL-34, His Tag, E. coli |
| LDG018PHE | Human IL-16 (aa 2-130), His Tag, E. coli | LDG039PHE | Human IL-36 Alpha, His Tag, E. coli |
| LDG020PHE | Human IL-17B, His Tag, E. coli | LDG040PHE | Human IL-36 Beta, His Tag, E. coli |
| LDG096PHE | Human IL-17D, His Tag, E. coli | LDG041PHE | Human IL-36 Gamma, His Tag, E. coli |
| LDG021PHE | Human IL-17F, His Tag, E. coli | LDG095PHE | Human IL-36RA, His Tag, E. coli |
| LDG023PHE | Human IL-19, His Tag, E. coli | LDG042PHE | Human IL-37, His Tag, E. coli |
| LDG024PHE | Human IL-20, His Tag, E. coli | LDG043PHE | Human IL-38, His Tag, E. coli |
| LDG025PHE | Human IL-21, His Tag, E. coli | LDG167PHE | Human LIF, His Tag, E. coli |
| LDG026PHE | Human IL-22, His Tag, E. coli | LDG125PHE | Human LIGHT, His Tag, E. coli |
| LDG027PHE | Human IL-23 (p19), His Tag, E. coli | LDG052PHE | Human MIF, His Tag, E. coli |
| LDG028PHE | Human IL-24, His Tag, E. coli | LDG122PHE | Human RANKL, His Tag, E. coli |
| LDG029PHE | Human IL-25, His Tag, E. coli | LDG126PHE | Human TL1A, His Tag, E. coli |

Cytokines

Human

| Cat. No. | Product name | Cat. No. | Product name |
|-----------|-----------------------------------|-----------|------------------------------------|
| LDG048PHE | Human TNF Alpha, His Tag, E. coli | LDG123PHE | Human TWEAK, His Tag, E. coli |
| LDG115PHE | Human TNF Beta, His Tag, E. coli | LDG182PHE | Human PROS1, His-SUMO Tag, E. coli |
| LDG065PHE | Human TPO, His Tag, E. coli | LDG184PHE | Human IL-18, Tag Free, E. coli |
| LDG121PHE | Human TRAIL, His Tag, E. coli | | |

Highlighted Products



Cytokines

Mouse

| Cat. No. | Product name | Cat. No. | Product name |
|-----------|--------------------------------------|-----------|--------------------------------------|
| LDG067PME | Mouse 4-1BBL, His Tag, E. coli | LDG035PME | Mouse IL-12 (p40), His Tag, E. coli |
| LDG075PME | Mouse BAFF, His Tag, E. coli | LDG036PME | Mouse IL-13, His Tag, E. coli |
| LDG063PME | Mouse BMP-4, His Tag, E. coli | LDG037PME | Mouse IL-15, His Tag, E. coli |
| LDG077PME | Mouse FasL, His Tag, E. coli | LDG038PME | Mouse IL-16, His Tag, E. coli |
| LDG073PME | Mouse Flt-3 Ligand, His Tag, E. coli | LDG039PME | Mouse IL-17A, His Tag, E. coli |
| LDG002PME | Mouse HMGB1, His Tag, E. coli | LDG040PME | Mouse IL-17B, His Tag, E. coli |
| LDG064PME | Mouse IFN Alpha 1a, His Tag, E. coli | LDG041PME | Mouse IL-17D, His Tag, E. coli |
| LDG065PME | Mouse IFN Beta 1a, His Tag, E. coli | LDG042PME | Mouse IL-17F, His Tag, E. coli |
| LDG066PME | Mouse IFN Gamma, His Tag, E. coli | LDG043PME | Mouse IL-18, His Tag, E. coli |
| LDG022PME | Mouse IL-1 Alpha, His Tag, E. coli | LDG044PME | Mouse IL-19, His Tag, E. coli |
| LDG023PME | Mouse IL-1 Beta, His Tag, E. coli | LDG024PME | Mouse IL-1RA, His Tag, E. coli |
| LDG025PME | Mouse IL-2, His Tag, E. coli | LDG045PME | Mouse IL-20, His Tag, E. coli |
| LDG026PME | Mouse IL-3, His Tag, E. coli | LDG046PME | Mouse IL-21, His Tag, E. coli |
| LDG027PME | Mouse IL-4, His Tag, E. coli | LDG047PME | Mouse IL-22, His Tag, E. coli |
| LDG028PME | Mouse IL-5, His Tag, E. coli | LDG048PME | Mouse IL-24, His Tag, E. coli |
| LDG029PME | Mouse IL-6, His Tag, E. coli | LDG049PME | Mouse IL-25, His Tag, E. coli |
| LDG030PME | Mouse IL-7, His Tag, E. coli | LDG050PME | Mouse IL-27 (EBI3), His Tag, E. coli |
| LDG031PME | Mouse IL-9, His Tag, E. coli | LDG051PME | Mouse IL-28A, His Tag, E. coli |
| LDG032PME | Mouse IL-10, His Tag, E. coli | LDG052PME | Mouse IL-28B, His Tag, E. coli |
| LDG033PME | Mouse IL-11, His Tag, E. coli | LDG053PME | Mouse IL-30, His Tag, E. coli |
| LDG034PME | Mouse IL-12 (p35), His Tag, E. coli | LDG054PME | Mouse IL-31, His Tag, E. coli |

| Cat. No. | Product name | Cat. No. | Product name |
|-----------|-------------------------------------|-----------|-----------------------------------|
| LDG055PME | Mouse IL-33, His Tag, E. coli | LDG084PME | Mouse MIF, His Tag, E. coli |
| LDG056PME | Mouse IL-34, His Tag, E. coli | LDG079PME | Mouse OX40L, His Tag, E. coli |
| LDG057PME | Mouse IL-36 Alpha, His Tag, E. coli | LDG080PME | Mouse RANKL, His Tag, E. coli |
| LDG058PME | Mouse IL-36 Gamma, His Tag, E. coli | LDG061PME | Mouse TNF Alpha, His Tag, E. coli |
| LDG059PME | Mouse IL-36RA, His Tag, E. coli | LDG062PME | Mouse TNF Beta, His Tag, E. coli |
| LDG060PME | Mouse IL-38, His Tag, E. coli | LDG081PME | Mouse TRAIL, His Tag, E. coli |
| LDG019PME | Mouse LIF, His Tag, E. coli | LDG082PME | Mouse TWEAK, His Tag, E. coli |
| LDG078PME | Mouse LIGHT, His Tag, E. coli | | |

Cytokines

Swine

| Cat. No. | Product name | Cat. No. | Product name |
|-----------|--------------------------------------|-----------|-----------------------------------|
| LDG018PSE | Swine BMP-4, His Tag, E. coli | LDG012PSE | Swine IL-6, His Tag, E. coli |
| LDG024PSE | Swine Flt-3 Ligand, His Tag, E. coli | LDG013PSE | Swine IL-8, His Tag, E. coli |
| LDG019PSE | Swine IFN Gamma, His Tag, E. coli | LDG014PSE | Swine IL-10, His Tag, E. coli |
| LDG008PSE | Swine IL-1 Alpha, His Tag, E. coli | LDG015PSE | Swine IL-15, His Tag, E. coli |
| LDG009PSE | Swine IL-1 Beta, His Tag, E. coli | LDG016PSE | Swine IL-17A, His Tag, E. coli |
| LDG010PSE | Swine IL-2, His Tag, E. coli | LDG017PSE | Swine TNF Alpha, His Tag, E. coli |
| LDG011PSE | Swine IL-4, His Tag, E. coli | | |

Growth Factors

Human

| Cat. No. | Product name | Cat. No. | Product name |
|-----------|--|-----------|---|
| LDG064PHE | Human Activin B, His Tag, E. coli | LDG084PHE | Human FGF-20, His Tag, E. coli |
| LDG129PHE | Human Beta-NGF, His Tag, E. coli | LDG085PHE | Human FGF-21, His Tag, E. coli |
| LDG067PHE | Human FGF-1, His Tag, E. coli | LDG086PHE | Human FGF-22, His-SUMO Tag, E. coli |
| LDG068PHE | Human FGF-2 (aa 135-288), His Tag, E. coli | LDG087PHE | Human FGF-23, His Tag, E. coli |
| LDG069PHE | Human FGF-3, His Tag, E. coli | LDG170PHE | Human G-CSF, His Tag, E. coli |
| LDG070PHE | Human FGF-4, His Tag, E. coli | LDG044PHE | Human GM-CSF, His Tag, E. coli |
| LDG071PHE | Human FGF-5, His Tag, E. coli | LDG059PHE | Human HDGF, His Tag, E. coli |
| LDG072PHE | Human FGF-6, His Tag, E. coli | LDG088PHE | Human IGF-I, His Tag, E. coli |
| LDG073PHE | Human FGF-8a, His Tag, E. coli | LDG089PHE | Human IGF-II, His Tag, E. coli |
| LDG074PHE | Human FGF-8b, His Tag, E. coli | LDG093PHE | Human M-CSF, His Tag, E. coli |
| LDG075PHE | Human FGF-9, His Tag, E. coli | LDG013PHM | Human R-Spondin 1, His-SUMO tag, HEK293 |
| LDG076PHE | Human FGF-10, His Tag, E. coli | LDG173PHE | Human SCF, His Tag, E. coli |
| LDG137PHE | Human FGF-11 Isoform 1, His Tag, E. coli | LDG177PHE | Human Sonic Hedgehog (C24II), His-SUMO Tag, E. coli |
| LDG138PHE | Human FGF-11 Isoform 2, His Tag, E. coli | LDG017PVM | Human Sonic Hedgehog (C24II), Tag Free, HEK293 |
| LDG077PHE | Human FGF-12, His Tag, E. coli | LDG090PHE | Human TGF Alpha, His Tag, E. coli |
| LDG078PHE | Human FGF-13, His Tag, E. coli | LDG051PHE | Human TGF Beta 1, His Tag, E. coli |
| LDG079PHE | Human FGF-14, His Tag, E. coli | LDG091PHE | Human TGF Beta 2, His Tag, E. coli |
| LDG080PHE | Human FGF-16, His Tag, E. coli | LDG152PHE | Human TGF Beta 3, His Tag, E. coli |
| LDG081PHE | Human FGF-17, His Tag, E. coli | LDG060PHE | Human VEGF121, His Tag, E. coli |
| LDG082PHE | Human FGF-18, His Tag, E. coli | LDG168PHE | Human VEGF165, His Tag, E. coli |
| LDG083PHE | Human FGF-19, His Tag, E. coli | LDG186PHE | Human Activin A, Tag Free, E. coli |

| Cat. No. | Product name | Cat. No. | Product name |
|-----------|-----------------------------|-----------|-------------------------------|
| LDG183PHE | Human EGF, His Tag, E. coli | LDG017PHM | Human Noggin, His Tag, HEK293 |

Growth Factors

Mouse

| Cat. No. | Product name | Cat. No. | Product name |
|-----------|-----------------------------------|-----------|------------------------------------|
| LDG083PME | Mouse Activin B, His Tag, E. coli | LDG074PME | Mouse HDGF, His Tag, E. coli |
| LDG090PME | Mouse Beta-NGF, His Tag, E. coli | LDG070PME | Mouse IGF-I, His Tag, E. coli |
| LDG072PME | Mouse EGF, His Tag, E. coli | LDG071PME | Mouse IGF-II, His Tag, E. coli |
| LDG069PME | Mouse FGF-2, His Tag, E. coli | LDG001PME | Mouse M-CSF, His Tag, E. coli |
| LDG092PME | Mouse FGF-21, His Tag, E. coli | LDG068PME | Mouse TGF Beta 1, His Tag, E. coli |
| LDG004PME | Mouse G-CSF, His Tag, E. coli | LDG020PME | Mouse VEGF121, His Tag, E. coli |
| LDG003PME | Mouse GM-CSF, His Tag, E. coli | LDG021PME | Mouse VEGF165, His Tag, E. coli |

Growth Factors

Swine

| Cat. No. | Product name | Cat. No. | Product name |
|-----------|--------------------------------|-----------|------------------------------------|
| LDG023PSE | Swine EGF, His Tag, E. coli | LDG022PSE | Swine IGF-I, His Tag, E. coli |
| LDG021PSE | Swine FGF-2, His Tag, E. coli | LDG020PSE | Swine TGF Beta 1, His Tag, E. coli |
| LDG001PSE | Swine GM-CSF, His Tag, E. coli | LDG007PSE | Swine VEGF, His Tag, E. coli |

Chemokines

Human

| Cat. No. | Product name | Cat. No. | Product name |
|-----------|-------------------------------|-----------|---|
| LDG164PHE | Human CCL2, His Tag, E. coli | LDG159PHE | Human CXCL7, His Tag, E. coli |
| LDG166PHE | Human CCL4, Tag Free, E. coli | LDG160PHE | Human CXCL9, His Tag, E. coli |
| LDG153PHE | Human CXCL1, His Tag, E. coli | LDG161PHE | Human CXCL10, His Tag, E. coli |
| LDG154PHE | Human CXCL2, His Tag, E. coli | LDG162PHE | Human CXCL11, His Tag, E. coli |
| LDG155PHE | Human CXCL3, His Tag, E. coli | LDG053PHE | Human CXCL12 (aa 24-88), His Tag, E. coli |
| LDG156PHE | Human CXCL4, His Tag, E. coli | LDG163PHE | Human CXCL13, His Tag, E. coli |
| LDG157PHE | Human CXCL5, His Tag, E. coli | LDG180PHE | Human CCL3, His Tag, E. coli |
| LDG158PHE | Human CXCL6, His Tag, E. coli | | |

Chemokines

Mouse

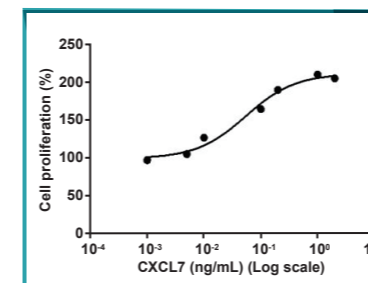
| Cat. No. | Product name | Cat. No. | Product name |
|-----------|--------------------------------|-----------|---|
| LDG016PME | Mouse CCL2, His Tag, E. coli | LDG009PME | Mouse CXCL7 (aa 40-113), His Tag, E. coli |
| LDG017PME | Mouse CCL3, His Tag, E. coli | LDG010PME | Mouse CXCL7 (aa 48-109), His Tag, E. coli |
| LDG018PME | Mouse CCL4, His Tag, E. coli | LDG011PME | Mouse CXCL9, His Tag, E. coli |
| LDG005PME | Mouse CXCL1, Tag Free, E. coli | LDG012PME | Mouse CXCL10, His Tag, E. coli |
| LDG006PME | Mouse CXCL2, His Tag, E. coli | LDG013PME | Mouse CXCL11, His Tag, E. coli |
| LDG007PME | Mouse CXCL3, His Tag, E. coli | LDG014PME | Mouse CXCL12, His Tag, E. coli |
| LDG008PME | Mouse CXCL5, His Tag, E. coli | LDG015PME | Mouse CXCL16, His Tag, E. coli |

Chemokines

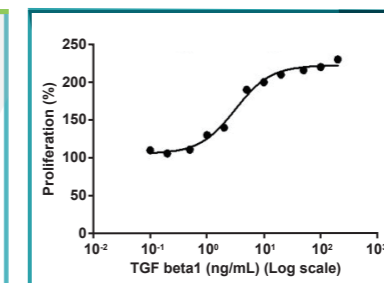
Swine

| Cat. No. | Product name | Cat. No. | Product name |
|-----------|--------------------------------|-----------|--------------------------------|
| LDG006PSE | Swine CCL2, His Tag, E. coli | LDG004PSE | Swine CXCL11, His Tag, E. coli |
| LDG002PSE | Swine CXCL9, His Tag, E. coli | LDG005PSE | Swine CXCL13, His Tag, E. coli |
| LDG003PSE | Swine CXCL10, His Tag, E. coli | | |

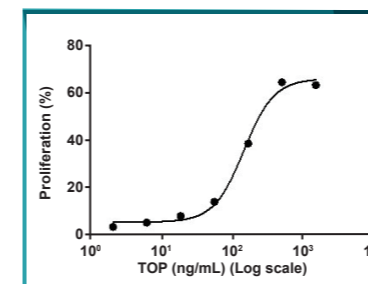
Highlighted Products



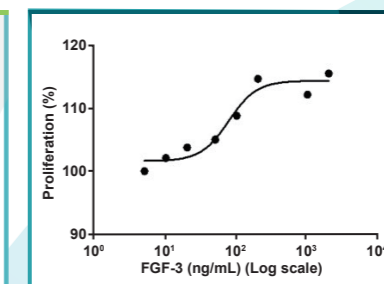
Human GM-CSF, His Tag, E. coli recombinant protein (LDG044PHE) induced TF-1 cells proliferation, with the ED₅₀ at 54.7 pg/mL.



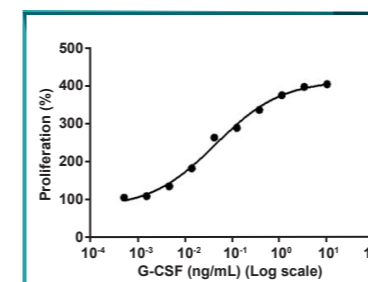
Human TGF Beta 1, His Tag, E. coli recombinant protein (LDG051PHE) induced MCF-7 cell proliferation, with the ED₅₀ at 3.13 ng/mL.



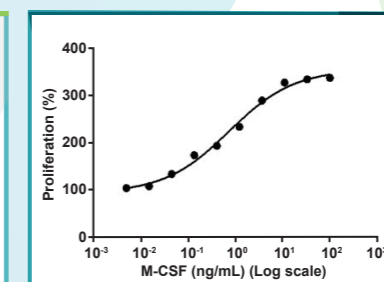
Human TPO, His Tag, E. coli recombinant protein (LDG065PHE) induced HUVEC cell proliferation, with the ED₅₀ at 2.5 ng/mL.



Human FGF-3, His Tag, E. coli recombinant protein (LDG069PHE) induced 3T3 cells proliferation, with the ED₅₀ at 77.51 ng/mL.



Human G-CSF, His Tag, E. coli recombinant protein (LDG170PHE) induced NFS-60 cell proliferation, with the ED₅₀ at 0.044 ng/mL.



Human M-CSF, His Tag, E. coli recombinant protein (LDG093PHE) induced NFS-60 cell proliferation, with the ED₅₀ at 0.75 ng/mL.

Enzymes

| Cat. No. | Product name | Cat. No. | Product name |
|-----------|--|-----------|------------------------------|
| LDG174PHE | Human ENO1, His Tag, E. coli | LDG169PHE | Human OGG1, His Tag, E. coli |
| LDG056PHE | Human MMP2 (Active), His Tag, E. coli | LDG062PHE | Human PGA5, His Tag, E. coli |
| LDG057PHE | Human MMP7 (Active), His Tag, E. coli | LDG091PME | Mouse ENO1, His Tag, E. coli |
| LDG055PHE | Human MMP7 (Proenzyme), His Tag, E. coli | LDG181PHE | Human MTM1, His Tag, E. coli |

Neurotrophins Human

| Cat. No. | Product name | Cat. No. | Product name |
|-----------|------------------------------|-----------|--|
| LDG130PHE | Human BDNF, His Tag, E. coli | LDG135PHE | Human Midkine, His Tag, E. coli |
| LDG133PHE | Human CDNF, His Tag, E. coli | LDG136PHE | Human Neurturin, His Tag, E. coli |
| LDG131PHE | Human CNTF, His Tag, E. coli | LDG134PHE | Human Pleiotrophin, His Tag, E. coli |
| LDG132PHE | Human GDNF, His Tag, E. coli | LDG185PHE | Human Heregulin Beta 1, His Tag, E. coli |

Neurotrophins Mouse

| Cat. No. | Product name | Cat. No. | Product name |
|-----------|------------------------------|-----------|-----------------------------------|
| LDG085PME | Mouse CDNF, His Tag, E. coli | LDG088PME | Mouse Midkine, His Tag, E. coli |
| LDG086PME | Mouse CNTF, His Tag, E. coli | LDG089PME | Mouse Neurturin, His Tag, E. coli |
| LDG087PME | Mouse GDNF, His Tag, E. coli | | |

Lectins

| Cat. No. | Product name | Cat. No. | Product name |
|-----------|------------------------------------|-----------|-------------------------------------|
| LDG140PHE | Human Galectin-1, His Tag, E. coli | LDG146PHE | Human Galectin-9, His Tag, E. coli |
| LDG141PHE | Human Galectin-2, His Tag, E. coli | LDG147PHE | Human Galectin-10, His Tag, E. coli |
| LDG142PHE | Human Galectin-3, His Tag, E. coli | LDG148PHE | Human Galectin-12, His Tag, E. coli |
| LDG143PHE | Human Galectin-4, His Tag, E. coli | LDG149PHE | Human Galectin-13, His Tag, E. coli |
| LDG144PHE | Human Galectin-7, His Tag, E. coli | LDG150PHE | Human Galectin-14, His Tag, E. coli |
| LDG145PHE | Human Galectin-8, His Tag, E. coli | LDG151PHE | Human Galectin-16, His Tag, E. coli |

Other Proteins

| Cat. No. | Product name | Cat. No. | Product name |
|-----------|--------------------------------------|-----------|------------------------------------|
| LDG009PHM | Human ACE2, Fc Tag, HEK293 | LDG179PHE | Human NF-L, His-SUMO Tag, E. coli |
| LDG058PHE | Human Annexin V, His Tag, E. coli | LDG176PHE | Human Irisin, Tag Free, E. coli |
| LDG118PHE | Human CD27L, His Tag, E. coli | LDG054PHE | Human RAGE, His Tag, E. coli |
| LDG014PHM | Human CD28 ECD, His-SUMO Tag, HEK293 | LDG076PME | Mouse CD27L, His Tag, E. coli |
| LDG119PHE | Human CD30L, His Tag, E. coli | LDG015PHM | Human IGFBP7, His-SUMO Tag, HEK293 |
| LDG066PHE | Human CD326, His Tag, E. coli | LDG016PHM | Human GM2A, His Tag, HEK293 |
| LDG116PHE | Human CD40L, His Tag, E. coli | LDG179PHE | Human NF-L, His-SUMO Tag, E. coli |

Virus-Like Particles

| Cat. No. | Product name | Cat. No. | Product name |
|-----------|--|-----------|---|
| LDG002PVM | SARS-CoV-2 Virus-Like Particles | LDG018PVM | SARS-CoV-2 Virus-Like Particles B.1.351 (Beta) |
| LDG022PVM | SARS-CoV-2 Virus-Like Particles B1.1.529 (Omicron) | LDG012PVM | SARS-CoV-2 Virus-Like Particles B.1.617.2 (Delta) |
| LDG011PVM | SARS-CoV-2 Virus-Like Particles B.1.1.7 (Alpha) | | |

Viral Antigens

SARS-CoV-2

| Cat. No. | Product name | Cat. No. | Product name |
|-----------|---|-----------|---|
| LDG005PVM | SARS-CoV Nucleocapsid Protein, His-SUMO Tag, HEK293 | LDG006PVE | SARS-CoV-2 Spike Protein (RBD), His Tag, E. coli |
| LDG017PVE | SARS-CoV-2 Nucleocapsid Protein (IHU B.1.640.2 Variant), Tag Free, E. coli | LDG005PVE | SARS-CoV-2 Spike Protein (S1 Subunit), His Tag, E. coli |
| LDG021PVM | SARS-CoV-2 Nucleocapsid Protein (Omicron B1.1.529 Variant), Tag Free, HEK293 | LDG013PVM | SARS-CoV-2 Spike Protein RBD (Delta B1.617.2 Variant), His-SUMO Tag, HEK293 |
| LDG016PVE | SARS-CoV-2 Nucleocapsid Protein (Omicron B1.1.529 Variant), Tag Free, E. coli | LDG016PVM | SARS-CoV-2 Spike Protein RBD, His-SUMO Tag, HEK293 |
| LDG006PVM | SARS-CoV-2 Nucleocapsid Protein, His-SUMO Tag, HEK293 | LDG009PVM | SARS-CoV-2 Trimeric Spike Protein (Beta B1.351 Variant), His Tag, HEK293 |
| LDG004PVE | SARS-CoV-2 Nucleocapsid Protein, Tag Free, E. coli | LDG008PVM | SARS-CoV-2 Trimeric Spike Protein (Delta B1.617.2 Variant), His Tag, HEK293 |
| LDG007PHM | SARS-CoV-2 ORF8 Protein (aa 16-121), His-SUMO Tag, HEK293 | LDG010PHM | SARS-CoV-2 Trimeric Spike Protein, His Tag, HEK293 |

Viral Antigens

Dengue Virus

| Cat. No. | Product name | Cat. No. | Product name |
|-----------|------------------------------------|-----------|-----------------------------------|
| LDG003PVE | DENV NS1 Protein, His Tag, E. coli | LDG001PVM | DENV NS1 Protein, His Tag, HEK293 |

Viral Antigens

Influenza Virus

| Cat. No. | Product name | Cat. No. | Product name |
|-----------|--|-----------|---|
| LDG018PVE | Influenza A H3N2 (A/Hong Kong/1/1968) Nucleocapsid Protein, His Tag, E. coli | LDG021PVE | Influenza A H3N2 (A/Washington/658/2019) Nucleocapsid Protein, His Tag, E. coli |
| LDG020PVE | Influenza A H7N9 (A/Shanghai/02/2013) Nucleocapsid Protein, His Tag, E. coli | LDG022PVE | Influenza B (B/Washington/02/2019) Nucleocapsid Protein, His Tag, E. coli |
| LDG019PVE | Influenza A H1N1 (A/New York/1682/2009) Nucleocapsid Protein, His Tag, E. coli | | |

Viral Antigens

Monkeypox Virus

| Cat. No. | Product name | Cat. No. | Product name |
|-----------|--|-----------|---|
| LDG026PVE | Monkeypox Virus (MPXV) A29L Protein, His Tag, E. coli | LDG027PVE | Monkeypox Virus (MPXV) L1R Protein, His Tag, E. coli |
| LDG023PVM | Monkeypox Virus (MPXV) A29L Protein, His-SUMO Tag, HEK 293 | LDG028PVE | Monkeypox Virus (MPXV) M1R Protein, His-SUMO Tag, E. coli |

Viral Antigens

Enterovirus

| Cat. No. | Product name |
|-----------|--|
| LDG029PVE | Enterovirus A71 (EV-A71) VP1 Protein, His Tag, E. coli |

Viral Antigens

RSV

| Cat. No. | Product name | Cat. No. | Product name |
|-----------|---|-----------|--|
| LDG024PVE | Human Respiratory Syncytial Virus A (RSV-A, Strain A2) Nucleocapsid Protein, His Tag, E. coli | LDG023PVE | Human Respiratory Syncytial Virus B (RSV-B) Nucleocapsid Protein, His Tag, E. coli |
| LDG025PVE | Human Respiratory Syncytial Virus A (RSV-A, Strain S2) Nucleocapsid Protein, His Tag, E. coli | LDG024PVM | Human Respiratory Syncytial Virus B (RSV-B) Fusion Glycoprotein F0, Fc Tag, HEK293 |

Viral Antigens

Other Viruses

| Cat. No. | Product name | Cat. No. | Product name |
|-----------|--|-----------|---|
| LDG009PVE | HCoV-229E Nucleocapsid Protein, His Tag, E. coli | LDG004PVM | MERS-CoV Nucleocapsid Protein, His-SUMO Tag, HEK293 |
| LDG008PVE | HCoV-HKU1 Nucleocapsid Protein, His Tag, E. coli | LDG030PVE | HIV-1 Capsid Protein p24, His Tag, E. coli |
| LDG003PVM | HCoV-NL63 Nucleocapsid Protein, His-SUMO Tag, HEK293 | LDG031PVE | PRRSV Nucleocapsid Protein, His Tag, E. coli |
| LDG007PVE | HCoV-OC43 Nucleocapsid Protein, His Tag, E. coli | | |

Primary Antibodies Disease Markers

| Cat. No. | Product name | Host & Clonality | Applications |
|-----------|--------------------------------------|------------------|---------------------|
| LDG0166YA | Anti-D-Dimer Antibody [Clone DD01] | Mouse mAb | ELISA, CLIA, LFIA |
| LDG0167YA | Anti-D-Dimer Antibody [Clone DD02] | Mouse mAb | ELISA, CLIA, LFIA |
| LDG0165YA | Anti-D-Dimer Antibody [Clone DD03] | Mouse mAb | ELISA, CLIA, LFIA |
| LDG0061YA | Anti-HbA1c Antibody [Clone 1D3] | Mouse mAb | ELISA, IP |
| LDG0062YA | Anti-HbA1c Antibody [Clone 9B7] | Mouse mAb | ELISA, IP |
| LDG0103YA | Anti-β-amyloid Antibody [Clone 85-1] | Mouse mAb | ELISA, Western Blot |
| LDG0057YA | Anti-HbA1c Antibody [Clone 6F12] | Mouse mAb | ELISA, IP |
| LDG0060YA | Anti-HbA1c Antibody [Clone 5G4] | Mouse mAb | ELISA, IP |
| LDG0191YA | Anti-HbA1c Antibody [Clone 6-2] | Mouse mAb | ELISA, LFIA |

Primary Antibodies Anti-Tag

| Cat. No. | Product name | Host & Clonality | Applications |
|-----------|---------------------------------------|------------------|--------------------------|
| LDG0004YB | Anti-cMyc Tag Antibody [Clone 66-38] | Mouse mAb | ELISA, WB, IP, IFA, FACS |
| LDG0009YB | Anti-DYKDDDDK Antibody [Clone 108-21] | Mouse mAb | ELISA, WB, IFA, IHC, IP |
| LDG0008YB | Anti-EGFP Antibody [Clone 42-2] | Mouse mAb | ELISA, WB, IP, IFA, FACS |
| LDG0005YB | Anti-GST Tag Antibody [Clone 89-3] | Mouse mAb | ELISA, WB, IP, IFA, FACS |
| LDG0002YB | Anti-HA Tag Antibody [Clone 98-106] | Mouse mAb | ELISA, WB, IP, IFA, FACS |
| LDG0001YB | Anti-His Tag Antibody [Clone 14-4] | Mouse mAb | ELISA, WB, IP, IFA, FACS |
| LDG0007YB | Anti-mCherry Antibody [Clone 45-5] | Mouse mAb | ELISA, WB, IP, IFA, FACS |
| LDG0006YB | Anti-SUMO Tag Antibody [Clone 2-2] | Mouse mAb | ELISA, WB, IP |
| LDG0003YB | Anti-V5 Tag Antibody [Clone 7-1-8] | Mouse mAb | ELISA, WB, IP, IFA, FACS |

Primary Antibodies Anti-Viral Antigens

| Cat. No. | Product name | Host & Clonality | Applications |
|-----------|---|------------------------|--------------------------------|
| LDG0014YA | Anti-DENV Capsid Antibody [Clone 25-4] | Mouse mAb | ELISA, WB, IFA, FACS |
| LDG0011YA | Anti-DENV E Antibody [Clone 102-1] | Mouse mAb | ELISA, WB, IFA, FACS |
| LDG0001YA | Anti-DENV NS1 Antibody [Clone 1D33] | Mouse mAb | ELISA, WB, IFA, FACS |
| LDG0006YA | Anti-DENV NS3 Antibody [Clone 15-5] | Mouse mAb | ELISA, WB, IFA, FACS |
| LDG0007YA | Anti-DENV NS5 Antibody [Clone 37-2] | Mouse mAb | ELISA, WB, IFA, FACS |
| LDG0050YA | Anti-HBV PreS1 Antibody [Clone S101] | Mouse mAb | ELISA, WB, IFA |
| LDG0051YA | Anti-HBV PreS2 Antibody [Clone S201] | Mouse mAb | ELISA, WB, IFA |
| LDG0052YA | Anti-HBsAg Antibody [Clone 2H11] | Mouse mAb | ELISA, WB, IFA |
| LDG0053YA | Anti-HBsAg Antibody [Clone 3D5] | Mouse mAb | ELISA, WB, IFA |
| LDG0144YA | Anti-Influenza A Virus NP Antibody [clone IA02] | Mouse mAb | ELISA, IFA, CLIA, LFIA |
| LDG0152YA | Anti-Influenza A Virus NP Antibody [clone IA03] | Mouse mAb | ELISA, IFA, CLIA, LFIA |
| LDG0153YA | Anti-Influenza A Virus NP Antibody [clone IA04] | Mouse mAb | ELISA, IFA, CLIA, LFIA |
| LDG0172YA | Anti-Influenza A Virus NP Antibody [clone IA05] | Mouse mAb | ELISA, IFA, CLIA, LFIA |
| LDG0173YA | Anti-Influenza A Virus NP Antibody [clone IA06] | Mouse mAb | ELISA, CLIA |
| LDG0171YA | Anti-Influenza A Virus NP Antibody [Clone LGA3] | Human recAb | ELISA, CLIA, LFIA |
| LDG0089YA | Anti-Influenza A Virus NP Antibody [Clone LGA4] | Human recAb | ELISA, IFA, FACS |
| LDG0090YA | Anti-Influenza A Virus NP Antibody [Clone LGA7] | Human recAb | ELISA, IFA, FACS, Lateral Flow |
| LDG0175YA | Anti-Influenza B Virus NP Antibody [clone IB05] | Mouse mAb | ELISA, CLIA, LFIA |
| LDG0176YA | Anti-Influenza B Virus NP Antibody [clone IB06] | Mouse mAb | ELISA, CLIA, LFIA |
| LDG0147YA | Anti-MPXV A29L IgG Antibody [Clone MA01] | Mouse recAb | ELISA, WB, IFA, FACS |
| LDG0154YA | Anti-MPXV M1R VHH Antibody [Clone MM01] | V _{HH} -Human | ELISA, WB, IFA, FACS |

Primary Antibodies Anti-Viral Antigens

| Cat. No. | Product name | Host & Clonality | Applications |
|-----------|---|------------------------|-----------------------------------|
| LDG0155YA | Anti-MPXV M1R VHH Antibody [Clone MM02] | V _{HH} -Human | ELISA, WB, IFA, FACS |
| LDG0135YA | Anti-SARS-CoV & CoV-2 NP Antibody [Clone 103] | Human recAb | ELISA, CLIA, LFIA |
| LDG0136YA | Anti-SARS-CoV & CoV-2 NP Antibody [Clone 104] | Human recAb | ELISA, CLIA, LFIA |
| LDG0078YA | Anti-SARS-CoV & CoV-2 NP IgA Antibody | Human recAb | ELISA, WB, IFA |
| LDG0076YA | Anti-SARS-CoV & CoV-2 NP IgG Antibody | Human recAb | ELISA, WB, IFA |
| LDG0077YA | Anti-SARS-CoV & CoV-2 NP IgM Antibody | Human recAb | ELISA, WB, IFA |
| LDG0082YA | Anti-SARS-CoV & CoV-2 Spike IgA Antibody [Clone CR3022] | Human recAb | ELISA, NTRL, SPR, Crystallography |
| LDG0080YA | Anti-SARS-CoV & CoV-2 Spike IgG Antibody [Clone CR3022] | Human recAb | ELISA, NTRL, SPR, Crystallography |
| LDG0081YA | Anti-SARS-CoV & CoV-2 Spike IgM Antibody [Clone CR3022] | Human recAb | ELISA, NTRL, SPR, Crystallography |
| LDG0083YA | Anti-SARS-CoV-2 NP Antibody [Clone 102-7] | Mouse mAb | ELISA, WB, IFA |
| LDG0084YA | Anti-SARS-CoV-2 NP Antibody [Clone 109-5] | Mouse mAb | ELISA, WB, IFA |
| LDG0158YA | Anti-SARS-CoV-2 NP Antibody [Clone 74-2] | Mouse mAb | ELISA, CLIA, IFA |
| LDG0096YA | Anti-SARS-CoV-2 NP Antibody [Clone 88] | Mouse mAb | ELISA, WB, IFA |
| LDG0086YA | Anti-SARS-CoV-2 Spike Antibody [Clone LGSV201] | Mouse mAb | ELISA, WB, IFA |
| LDG0182YA | Anti-Influenza B Virus NP Antibody [Clone IB07] | Mouse mAb | ELISA, CLIA, LFIA |
| LDG0183YA | Anti-Influenza B Virus NP Antibody [Clone IB08] | Mouse mAb | ELISA, CLIA, LFIA |
| LDG0008YA | Anti-DENV NS4B Antibody [Clone 24-1] | Mouse mAb | ELISA, WB, IFA, FACS |
| LDG0013YA | Anti-DENV pr Antibody [Clone 47-2] | Mouse mAb | ELISA, WB, IFA, FACS |
| LDG0009YA | Anti-DENV M Antibody [Clone 31-1] | Mouse mAb | ELISA, WB, IFA, FACS |
| LDG0161YA | Anti-African Swine Fever Virus (ASFV) p30 Antibody [Clone 16E1] | Mouse mAb | ELISA, CLIA |
| LDG0162YA | Anti-African Swine Fever Virus (ASFV) p30 Antibody [Clone 18H1] | Mouse mAb | ELISA, CLIA |

| Cat. No. | Product name | Host & Clonality | Applications |
|-----------|--------------------------------------|------------------|----------------------|
| LDG0015YA | Anti-ZIKV NS1 Antibody [Clone ZK51] | Mouse mAb | ELISA, WB, IFA |
| LDG0016YA | Anti-ZIKV NS1 Antibody [Clone ZK243] | Mouse mAb | ELISA, WB, IFA, FACS |
| LDG0020YA | Anti-ZIKV E Antibody [Clone 125-1] | Mouse mAb | ELISA, WB, IFA |
| LDG0187YA | Anti-MPXV M1R Antibody [Clone 64-2] | Mouse mAb | ELISA, WB, IFA, LFIA |
| LDG0188YA | Anti-MPXV M1R Antibody [Clone 82-4] | Mouse mAb | ELISA, WB, IFA, LFIA |
| LDG0189YA | Anti-MPXV A29L Antibody [Clone 19-1] | Mouse mAb | ELISA, WB, IFA |
| LDG0190YA | Anti-MPXV L1R Antibody [Clone 5-1] | Mouse mAb | ELISA, WB, IFA |

Primary Antibodies Anti-Internal Control

| Cat. No. | Product name | Host & Clonality | Applications |
|-----------|--|------------------|----------------|
| LDG0002YC | Anti-Alpha Tubulin Antibody [Clone 82-1] | Mouse mAb | ELISA, WB, IFA |
| LDG0009YC | Anti-GAPDH Antibody [Clone 38-1] | Mouse mAb | ELISA, WB, IFA |

Primary Antibodies Anti-Cytokines & Growth Factors

| Cat. No. | Product name | Host & Clonality | Applications |
|-----------|---------------------------------------|------------------|----------------------|
| LDG0033YA | Anti-IL-33 Antibody [Clone 7E8] | Mouse mAb | ELISA, WB, IFA, FACS |
| LDG0034YA | Anti-IL-38 Antibody [Clone 56-1] | Mouse mAb | ELISA, WB, IFA, FACS |
| LDG0023YA | Anti-IL-4 Antibody [Clone 6-5] | Mouse mAb | ELISA, WB, IFA, FACS |
| LDG0030YA | Anti-IL-8 Antibody [Clone 58-1] | Mouse mAb | ELISA, WB, IFA, FACS |
| LDG0039YA | Anti-RAGE Antibody [Clone 16-1] | Mouse mAb | ELISA, WB, IFA, FACS |
| LDG0047YA | Anti-TGF Beta 1 Antibody [Clone 51-3] | Mouse mAb | ELISA, WB, IFA, FACS |

Primary Antibodies

Anti-Cytokines & Growth Factors

| Cat. No. | Product name | Host & Clonality | Applications |
|-----------|-------------------------------------|------------------|----------------------|
| LDG0041YA | Anti-CXCL12 Antibody [Clone 69-2] | Mouse mAb | ELISA, WB, IFA, FACS |
| LDG0040YA | Anti-HDGF Antibody [Clone 83-5] | Mouse mAb | ELISA, WB, IFA, FACS |
| LDG0021YA | Anti-IL-1 Beta Antibody [Clone 4-1] | Mouse mAb | ELISA, WB, IFA, FACS |
| LDG0180YA | Anti-IL-6 Antibody [Clone 3-5] | Mouse mAb | ELISA |
| LDG0031YA | Anti-IL-10 Antibody [Clone 17-1] | Mouse mAb | ELISA, WB, IFA, FACS |
| LDG0032YA | Anti-IL-16 Antibody [Clone 72-15] | Mouse mAb | ELISA, WB, IFA, FACS |
| LDG0022YA | Anti-IL-2 Antibody [Clone 62-2] | Mouse mAb | ELISA, WB, IFA, FACS |
| LDG0026YA | Anti-IL-6 Antibody [Clone 9D9] | Mouse mAb | ELISA, WB, IFA, FACS |
| LDG0193YA | Anti-IL-5 Antibody [Clone 5-3] | Mouse mAb | ELISA |

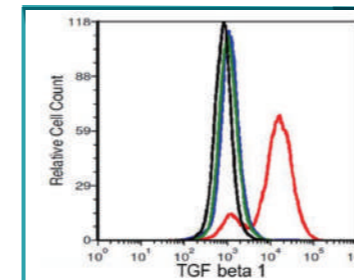
| Cat. No. | Product name | Host & Clonality | Applications |
|-----------|--|------------------|----------------------|
| LDG0093YA | Anti-HRV 3C Protease Antibody [Clone 12-4] | Mouse mAb | ELISA |
| LDG0094YA | Anti-HRV 3C Protease Antibody [Clone 23-1] | Mouse mAb | ELISA |
| LDG0091YA | Anti-HRV 3C Protease Antibody [Clone 3-1] | Mouse mAb | ELISA |
| LDG0092YA | Anti-HRV 3C Protease Antibody [Clone 5-8] | Mouse mAb | ELISA |
| LDG0140YA | Anti-Human Red Blood Cell Antibody | Human recAb | ELISA, CLIA, LFIA |
| LDG0042YA | Anti-MMP7 Antibody [Clone 1-4] | Mouse mAb | ELISA, WB, IFA, FACS |
| LDG0043YA | Anti-MMP7 Antibody [Clone 20-9] | Mouse mAb | ELISA, WB, IFA, FACS |
| LDG0054YA | Anti-PGA5 Antibody [Clone 85-5] | Mouse mAb | ELISA, WB, IFA, FACS |
| LDG0046YA | Anti-ST2L Antibody [Clone 9G15] | Mouse mAb | ELISA, WB, IFA, FACS |

Primary Antibodies

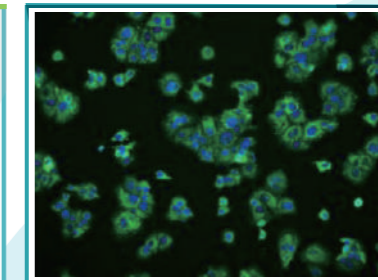
Others

| Cat. No. | Product name | Host & Clonality | Applications |
|-----------|--|------------------|-----------------------|
| LDG0069YA | Anti-CD3 Antibody [Clone OKT3] | Mouse mAb | IHC, FACS |
| LDG0178YA | Anti-CD28 Antibody [Clone 0AA01] | Human recAb | ELISA |
| LDG0179YA | Anti-CD28 Chimeric IgG Antibody [Clone 0AA02] | Human recAb | ELISA |
| LDG0070YA | Anti-CD326 Antibody [Clone 1H7] | Mouse mAb | ELISA, WB, IFA, FACS |
| LDG0045YA | Anti-c-Met Antibody [Clone 4A9] | Mouse mAb | ELISA, WB, IFA, FACS |
| LDG0095YA | Anti-EGFR Antibody [Clone C225] (Cetuximab Biosimilar) | Human recAb | ELISA, FACS, IHC, IFA |
| LDG0044YA | Anti-GIF Antibody [Clone 50-1] | Mouse mAb | ELISA, WB, IFA, FACS |
| LDG0055YA | Anti-Hemoglobin Antibody [Clone 07-01] | Mouse mAb | ELISA, IP |
| LDG0038YA | Anti-HMGB1 Antibody [Clone B1511] | Mouse mAb | ELISA, WB, IFA, FACS |

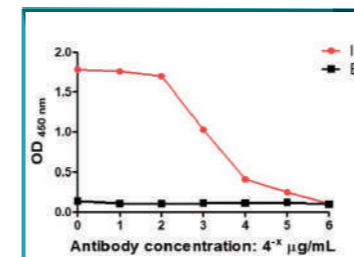
Highlighted Products



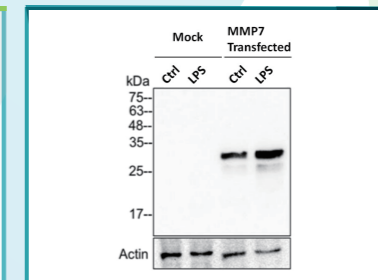
Anti-TGF Beta 1 Antibody [Clone 51-3] (LDG0047YA) was used to detect cells expressing TGF beta 1 (red), beta 2 (blue), and beta 3 (green) by flow cytometry analysis.



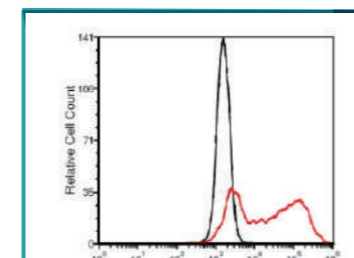
Anti-IL-4 Antibody [Clone 6-5] (LDG0023YA) was used to detect endogenous IL-4 expression in MCF-7 cells by immunocytochemistry.



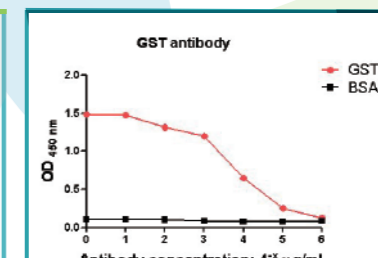
Anti-IL-8 Antibody [Clone 58-1] (LDG0030YA) was used to detect the IL-8 protein by ELISA.



Anti-MMP7 Antibody [Clone 1-4] (LDG0042YA) was used to detect MMP7 protein in 293T cells by Western blot. 293T cells were treated by LPS to increase the expression of MMP7.



Anti-mCherry Antibody [Clone 45-5] (LDG0007YB) was used to detect mCherry-expressing cells by flow cytometry analysis.



Anti-GST Tag Antibody [Clone 89-3] (LDG0005YB) was used to detect a GST-fused protein by ELISA.

Secondary Antibodies

| Cat. No. | Product name | Conjugation | Applications |
|-----------|--|-------------|----------------------|
| LDG0021YE | AccuBlot™ Anti-Mouse IgG Antibody (HRP) | HRP | ELISA, WB |
| LDG0075YA | Anti-M13 Antibody [Clone 8C1] (HRP) | HRP | ELISA, Phage display |
| LDG0006YE | Chicken Anti-Sheep IgG (H+L) Antibody | None | Immunoassay |
| LDG0044YE | Chicken Anti-Sheep IgG (H+L) Antibody (FAM) | 5(6)-FAM | IFA, FACS |
| LDG0020YE | Chicken Anti-Sheep IgG (H+L) Antibody (HRP) | HRP | ELISA, IHC, WB |
| LDG0050YE | Chicken Anti-Sheep IgG (H+L) Antibody (TAMRA) | 5(6)-TAMRA | IFA, FACS |
| LDG0004YE | Donkey Anti-Goat IgG (H+L) Antibody | None | Immunoassay |
| LDG0042YE | Donkey Anti-Goat IgG (H+L) Antibody (FAM) | 5(6)-FAM | IFA, FACS |
| LDG0048YE | Donkey Anti-Goat IgG (H+L) Antibody (TAMRA) | 5(6)-TAMRA | IFA, FACS |
| LDG0011YE | Goat Anti-Human IgG (Fc Fragment) Antibody | None | Immunoassay |
| LDG0017YE | Goat Anti-Human IgG (Fc Fragment) Antibody (HRP) | HRP | ELISA, IHC, WB |
| LDG0001YE | Goat Anti-Mouse IgG (H+L) Antibody | None | Immunoassay |
| LDG0040YE | Goat Anti-Mouse IgG (H+L) Antibody (FAM) | 5(6)-FAM | IFA, FACS |
| LDG0012YE | Goat Anti-Mouse IgG (H+L) Antibody (HRP) | HRP | ELISA, IHC, WB |
| LDG0022YE | Goat Anti-Mouse IgG (H+L) Antibody (iFluor 405) | iFluor 405 | IFA, FACS |
| LDG0028YE | Goat Anti-Mouse IgG (H+L) Antibody (iFluor 488) | iFluor 488 | IFA, FACS |
| LDG0034YE | Goat Anti-Mouse IgG (H+L) Antibody (iFluor 594) | iFluor 594 | IFA, FACS |
| LDG0038YE | Goat Anti-Mouse IgG (H+L) Antibody (iFluor 680) | iFluor 680 | IFA, FACS |
| LDG0026YE | Goat Anti-Mouse IgG (H+L) Antibody (mFluor 450) | mFluor 450 | IFA, FACS |
| LDG0046YE | Goat Anti-Mouse IgG (H+L) Antibody (TAMRA) | 5(6)-TAMRA | IFA, FACS |
| LDG0003YE | Goat Anti-Rabbit IgG (H+L) Antibody | None | Immunoassay |

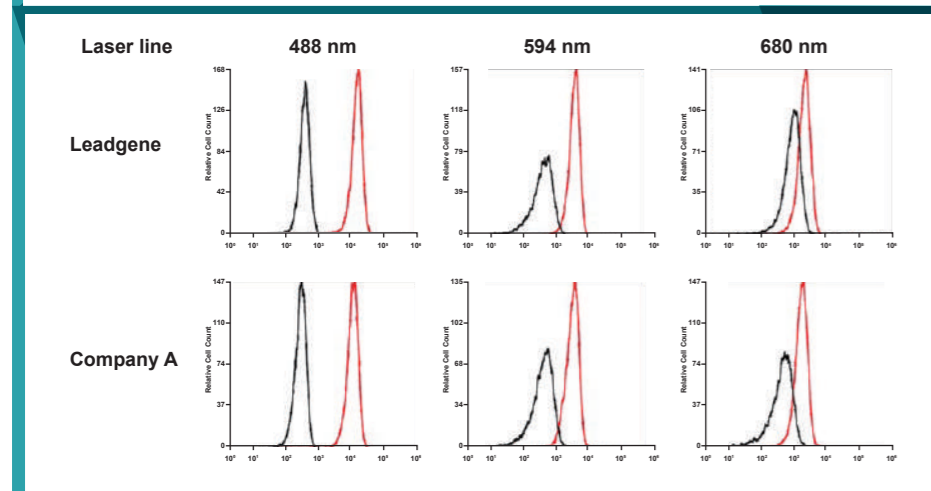
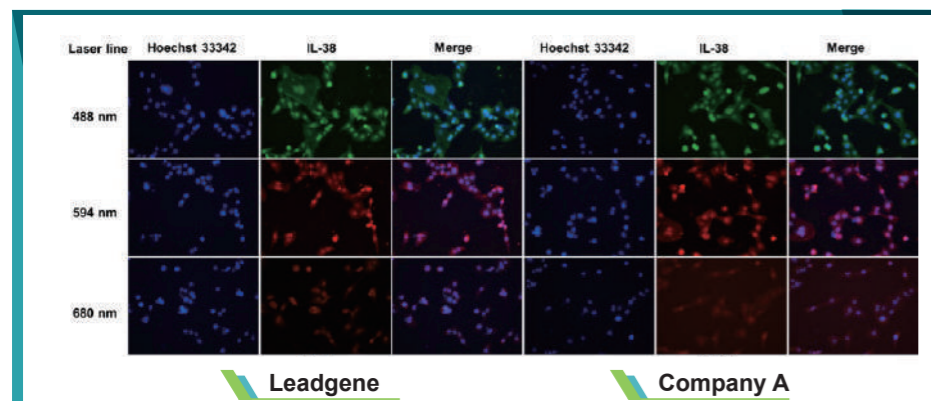
| Cat. No. | Product name | Conjugation | Applications |
|-----------|---|-------------|----------------|
| LDG0041YE | Goat Anti-Rabbit IgG (H+L) Antibody (FAM) | 5(6)-FAM | IFA, FACS |
| LDG0014YE | Goat Anti-Rabbit IgG (H+L) Antibody (HRP) | HRP | ELISA, IHC, WB |
| LDG0023YE | Goat Anti-Rabbit IgG (H+L) Antibody (iFluor 405) | iFluor 405 | IFA, FACS |
| LDG0029YE | Goat Anti-Rabbit IgG (H+L) Antibody (iFluor 488) | iFluor 488 | IFA, FACS |
| LDG0035YE | Goat Anti-Rabbit IgG (H+L) Antibody (iFluor 594) | iFluor 594 | IFA, FACS |
| LDG0039YE | Goat Anti-Rabbit IgG (H+L) Antibody (iFluor 680) | iFluor 680 | IFA, FACS |
| LDG0027YE | Goat Anti-Rabbit IgG (H+L) Antibody (mFluor 450) | mFluor 450 | IFA, FACS |
| LDG0047YE | Goat Anti-Rabbit IgG (H+L) Antibody (TAMRA) | 5(6)-TAMRA | IFA, FACS |
| LDG0007YE | Goat Anti-Rat IgG (H+L) Antibody | None | Immunoassay |
| LDG0045YE | Goat Anti-Rat IgG (H+L) Antibody (FAM) | 5(6)-FAM | IFA, FACS |
| LDG0019YE | Goat Anti-Rat IgG (H+L) Antibody (HRP) | HRP | ELISA, IHC, WB |
| LDG0025YE | Goat Anti-Rat IgG (H+L) Antibody (iFluor 405) | iFluor 405 | IFA, FACS |
| LDG0031YE | Goat Anti-Rat IgG (H+L) Antibody (iFluor 488) | iFluor 488 | IFA, FACS |
| LDG0037YE | Goat Anti-Rat IgG (H+L) Antibody (iFluor 594) | iFluor 594 | IFA, FACS |
| LDG0051YE | Goat Anti-Rat IgG (H+L) Antibody (TAMRA) | 5(6)-TAMRA | IFA, FACS |
| LDG0008YE | Mouse Anti-Human IgG (H+L) Antibody [Clone hG15] | None | Immunoassay |
| LDG0010YE | Mouse Anti-Human IgM Antibody | None | Immunoassay |
| LDG0002YE | Rabbit Anti-Mouse IgG (H+L) Antibody | None | IFA, FACS |
| LDG0013YE | Rabbit Anti-Mouse IgG (H+L) Antibody (HRP) | HRP | ELISA, IHC, WB |
| LDG0024YE | Rabbit Anti-Mouse IgG (H+L) Antibody (iFluor 405) | iFluor 405 | IFA, FACS |
| LDG0030YE | Rabbit Anti-Mouse IgG (H+L) Antibody (iFluor 488) | iFluor 488 | IFA, FACS |

Secondary Antibodies

| Cat. No. | Product name | Conjugation | Applications |
|-----------|--|-------------|----------------|
| LDG0036YE | Rabbit Anti-Mouse IgG (H+L) Antibody (iFluor 594) | iFluor 594 | IFA, FACS |
| LDG0005YE | Sheep Anti-Chicken IgY (H+L) Antibody | None | Immunoassay |
| LDG0043YE | Sheep Anti-Chicken IgY (H+L) Antibody (FAM) | 5(6)-FAM | IFA, FACS |
| LDG0018YE | Sheep Anti-Chicken IgY (H+L) Antibody (HRP) | HRP | ELISA, IHC, WB |
| LDG0032YE | Sheep Anti-Chicken IgY (H+L) Antibody (iFluor 488) | iFluor 488 | IFA, FACS |
| LDG0049YE | Sheep Anti-Chicken IgY (H+L) Antibody (TAMRA) | 5(6)-TAMRA | IFA, FACS |

Amplification Technologies Master Mix

| Cat. No. | Product name | Cat. No. | Product name |
|-----------|--|-----------|---|
| LDG0020RF | 2X Colorimetric RT-LAMP Master Mix | LDG0029RF | EffiStart™ 2X Probe qPCR Master Mix |
| LDG0025RF | 2X Fluorescent RT-LAMP Master Mix | LDG0031RF | EffiStart™ 2X Probe qPCR Master Mix (Glycerol-Free) |
| LDG0009RF | 5X Taq PCR Master Mix | LDG0032RF | EffiStart™ 5X Probe qPCR Master Mix (Glycerol-Free) |
| LDG0023RF | StablePlus™ 2X RT-LAMP Master Mix | LDG0033RF | EffiStart™ 2X One-Step Probe RT-qPCR Master Mix |
| LDG0024RF | StablePlus™ 2X Colorimetric RT-LAMP Master Mix | LDG0034RF | EffiStart™ 5X One-Step Probe RT-qPCR Master Mix |
| LDG0026RF | StablePlus™ 2X Fluorescent RT-LAMP Master Mix | LDG0035RF | EffiStart™ 2X One-Step Probe RT-qPCR Master Mix (Glycerol-Free) |
| LDG0027RF | LEADSPHERE® One-Step RT-PCR Master Mix | LDG0036RF | EffiStart™ 5X One-Step Probe RT-qPCR Master Mix (Glycerol-Free) |



Comparative data between Leadgene and a competitor's secondary antibodies.

Leadgene and a competitor's secondary antibodies were performed side-by-side by immunocytochemistry, revealing closely identical signal intensity.

Amplification Technologies Polymerase

| Cat. No. | Product name | Cat. No. | Product name |
|-----------|---|-----------|--|
| LDG0011RF | M-MLV Reverse Transcriptase (Glycerol-Free) | LDG0021RF | Bst DNA Polymerase |
| LDG0006RF | M-MLV Reverse Transcriptase | LDG0010RF | Hot Start Taq DNA Polymerase (Glycerol-free) |
| LDG0012RF | Bst DNA Polymerase (Glycerol-Free) | LDG0022RF | HIV-1 Reverse Transcriptase |

Amplification Technologies **NTP & dNTP**

| Cat. No. | Product name | Cat. No. | Product name |
|-----------|-----------------------|-----------|-------------------------------------|
| LDG0002RI | ATP Solution (100 mM) | LDG0006RI | NTP Set, 100 mM Solutions |
| LDG0003RI | UTP Solution (100 mM) | LDG0015RI | Pseudo UTP Sodium Solution (100 mM) |
| LDG0004RI | CTP Solution (100 mM) | LDG0016RI | N1-Me-pUTP Sodium Solution (100 mM) |
| LDG0005RI | GTP Solution (100 mM) | | |

Molecular Biology **Buffer**

| Cat. No. | Product name | Cat. No. | Product name |
|-----------|------------------------|-----------|------------------------|
| LDG0017RH | LG-1 2X Diluent Buffer | LDG0019RH | LG-3 2X Diluent Buffer |
| LDG0018RH | LG-2 2X Diluent Buffer | LDG0020RH | LG-4 2X Diluent Buffer |

Molecular Biology **In Vitro Transcription**

| Cat. No. | Product name | Cat. No. | Product name |
|-----------|-------------------|-----------|-----------------------------------|
| LDG0001RI | T7 RNA Polymerase | LDG0007RI | Inorganic Pyrophosphatase (Yeast) |

Cell Biology Reagents **Transfection reagent**

| Cat. No. | Product name |
|-----------|------------------------------|
| LDG0001RA | HyFect® Transfection Reagent |

Cell Biology Reagents **Apoptosis reagent**

| Cat. No. | Product name | Cat. No. | Product name |
|-----------|---|-----------|---|
| LDG0001RB | Annexin V-FAM Apoptosis Detection Reagent | LDG0009RB | Annexin V-iFluor 488 + PI Apoptosis Detection Reagent |
| LDG0002RB | Annexin V-FAM + PI Apoptosis Detection Reagent | LDG0003RB | Annexin V-TAMRA Apoptosis Detection Reagent |
| LDG0011RB | Annexin V-FAM + 7-AAD Apoptosis Detection Reagent | | |

Cell Biology Reagents **Other**

| Cat. No. | Product name | Cat. No. | Product name |
|-----------|---|-----------|------------------------------|
| LDG0005RO | Leadgene® ScaffoldForm 3D Culturing Gel | LDG0006RO | Leadgene® XenoForm Tumor Gel |

Protein Engineering

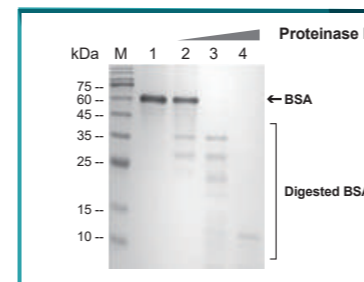
| Cat. No. | Product name | Cat. No. | Product name |
|-----------|---|-----------|---|
| LDG0003RC | HyLink™ HRP Conjugation Kit, 1 mg*1 | LDG0011RD | Protein G Sepharose |
| LDG0006RC | HyLink™ Biotin Labeling Kit, 1 mg*1 | LDG0012RD | Protein G Sepharose Purification Kit |
| LDG0009RG | HRV 3C Protease | LDG0013RD | Streptavidin Sepharose |
| LDG0010RG | UniHRV 3C Protease | LDG0014RD | Streptavidin Sepharose Purification Kit |
| LDG0014RG | SUMO Protease (ULP1) (Active) | LDG0015RD | Ni-NTA Sepharose |
| LDG0006RG | Nuclease | LDG0016RD | Ni-NTA Sepharose Purification Kit |
| LDG0001RD | Anti-cMyc Tag Antibody Sepharose | LDG0017RD | Anti-EGFP Antibody Sepharose |
| LDG0002RD | Anti-cMyc Tag Antibody Sepharose Purification Kit | LDG0018RD | Anti-EGFP Antibody Sepharose Purification Kit |
| LDG0003RD | Anti-HA Tag Antibody Sepharose | LDG0019RD | Anti-SUMO Tag Antibody Sepharose |
| LDG0004RD | Mouse Anti-HA Tag mAb Sepharose Purification Kit | LDG0020RD | Anti-SUMO Tag Antibody Sepharose Purification Kit |
| LDG0005RD | Anti-V5 Tag Antibody Sepharose | LDG0011RG | Colipase |
| LDG0006RD | Anti-V5 Tag Antibody Sepharose Purification Kit | LDG0013RG | Peroxidase |
| LDG0007RD | Anti-GST Tag Antibody Sepharose | LDG0002RG | Endoglycosidase H (Endo H) |
| LDG0008RD | Anti-GST Tag Antibody Sepharose Purification Kit | LDG0006RI | NTP Set, 100 mM Solutions |
| LDG0009RD | Protein A Sepharose | LDG0022RD | Anti-mCherry Antibody Sepharose Purification Kit |
| LDG0010RD | Protein A Sepharose Purification Kit | | |

ELISA Kits

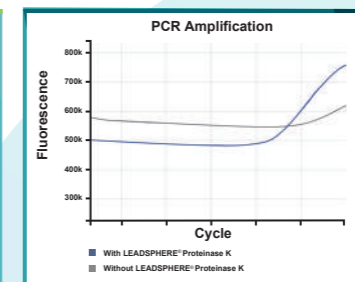
| Cat. No. | Product name | Cat. No. | Product name |
|-----------|---|-----------|---------------------------|
| LDG00016E | SARS-CoV-2 Nucleocapsid Protein ELISA Kit | LDG00021E | Nuclease ELISA Kit |
| LDG00017E | HRV 3C Protease ELISA Kit | LDG00026E | Enterokinase ELISA Kit |
| LDG00019E | SUMO Protease (ULP1) ELISA Kit | LDG00028E | Human GM-CSF ELISA Kit |
| LDG00009E | IL-8 ELISA Kit | LDG00027E | Human NF-L ELISA Kit |
| LDG00020E | TEV Protease ELISA Kit | LDG00025E | Human IL-6 ELISA Kit |
| LDG00024E | T7 RNA Polymerase ELISA Kit | LDG00023E | Human IFN Gamma ELISA Kit |
| LDG00022E | Monkeypox Virus (MPXV) M1R ELISA Kit | | |

LEADSPHERE® Technology

| Cat. No. | Product name | Format | Cat. No. | Product name | Format |
|-----------|--------------------------|--------------------|-----------|--|--------------------|
| LDG0001RG | LEADSPHERE® Proteinase K | Lyophilized Sphere | LDG0027RF | LEADSPHERE® One-Step RT-PCR Master Mix | Lyophilized Sphere |



LEADSPHERE® Proteinase K (LDG0001RG) completely digested bovine serum albumin (BSA)



LEADSPHERE® Proteinase K (LDG0001RG) pretreatment produced sensitive detection in RT-qPCR assay.

